

SCIENTIFIC EXPLORATION OF AN UNKNOWN REGION

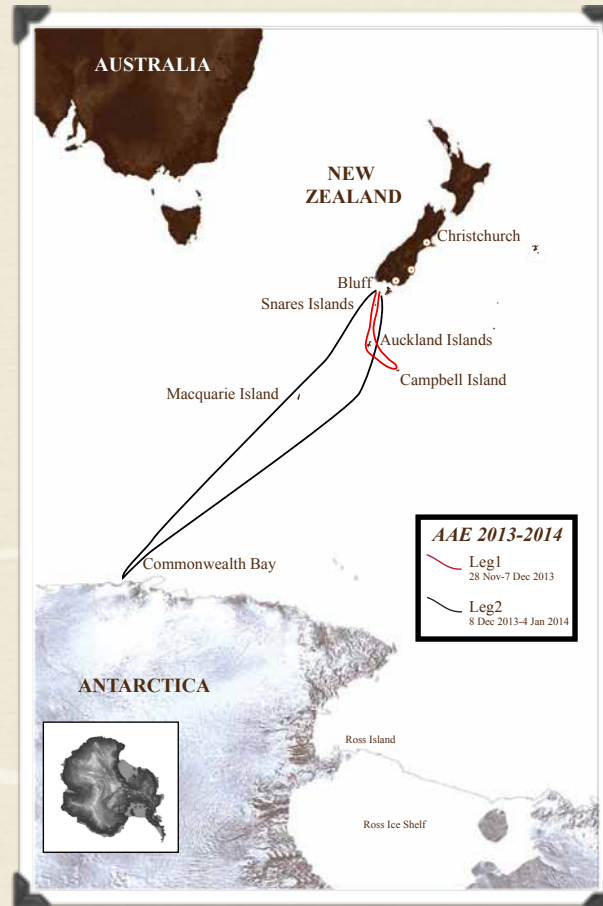
2013-2014 marks the centenary of the Australasian Antarctic Expedition (AAE) led by the great scientist and explorer Sir Douglas Mawson. Using a mixture of books, articles, lecture tours and films, Mawson and the Antarctic explorers of the time fed a public hungry to learn more of this unique land. And yet the Antarctic remains one of the last great unexplored regions on our planet. In spite of over a century of discovery – including aerial and satellite surveys – remarkably little of this great continent and surrounding ocean has been explored. The pristine southern polar region is uniquely placed to monitor the health of our planet.

The AAE has identified a team of scientists who are world experts in the natural and physical sciences while also being passionate about science communication. The programme of research will start as soon as the vessel leaves Hobart for Commonwealth Bay via the subantarctic islands. The research programmes to be addressed include *oceanography, climate, ornithology and marine and terrestrial biology*.

The Australasian Antarctic Expedition (AAE) will focus its efforts on the Antarctic Commonwealth Bay and subantarctic islands to provide the first complete snapshot of this region for a century.



THE EXPEDITION



CONTACT US AT
SPIRIT OF MAWSON

University of New South Wales,
Sydney, NSW, Australia

E: admin@spiritofmawson.com

F: +61 2 9385 1558

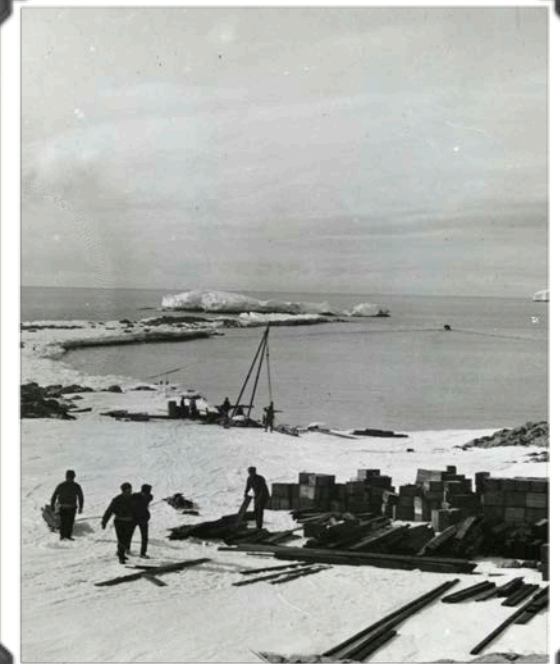
W: www.spiritofmawson.com



A.A.E.

THE SPIRIT OF MAWSON

THE AUSTRALASIAN ANTARCTIC
EXPEDITION 2013-2014



Commonwealth Bay, Antarctica. Credit: Victoria State Library AAE 1911-1914

**COMMONWEALTH BAY,
ANTARCTICA.**

8th December 2013 to 4th January 2014



A.A.E.

MV AKADEMIK SHOKALSKIY

Our ship, the Shokalskiy, is a true expedition vessel. Built in 1984 for polar and oceanographic research, she is fully ice-strengthened. This class of vessel is world renowned for polar exploration, because of its strength, maneuverability and small passenger numbers. With a maximum of 26 berths available to the public to join as members of the AAE, we are able to offer a unique expedition experience.

The Shokalskiy provides comfortable accommodation in double and twin cabins with private facilities. All cabins have outside windows and ample storage space. On board there is a combined bar/library lounge area and a dedicated lecture room, where the science team and expedition staff will present a programme of talks.

A range of berths are available for this leg of the AAE

MINI SUITE ■ \$18,900 pp

These cabins include a separate bedroom with a double bed and a single bed or sofa in the lounge, writing desk, wardrobe and draws. Private bathroom with shower, toilet and washbasin. Large side facing windows to allow great views.

SUPERIOR PLUS ■ \$17,500 pp

These cabins include two lower berths, writing desk, wardrobe and draws. Private bathroom with shower, toilet and washbasin. These cabins have side windows.

SUPERIOR ■ \$16,900 pp

These cabins include one bunk (one upper and one lower berth), writing desk, wardrobe and draws. Private bathroom with shower, toilet and washbasin. These cabins have side windows.

The prices quoted above includes all onboard ship accommodation and full catering, but does not include laundry, drinks, international/domestic flights, visas and personal travel insurance.



“Shackleton grafted science on to exploration. Mawson added exploring to science.” Frank Hurley.

The Australasian Antarctic Expedition (AAE) 2013-2014 is a celebration of science and adventure, repeating century old measurements to discover and communicate the environmental changes taking place in the south. The AAE is divided into two legs, the first focused on the Australasian subantarctic islands. On this second, longer voyage we will head south, deep into the Southern Ocean. Our destination is Commonwealth Bay, where we will attempt to reach the original AAE huts at Cape Denison.

Setting out from New Zealand on the 8th of December 2013, we will make a course south for the subantarctic Macquarie Island, then onto Commonwealth Bay, making scientific observations as we go. Navigating through the sea ice we will embark on a comprehensive science programme, focussing on marine biology and oceanography.

Because of extensive sea ice in Commonwealth Bay, we will undertake aerial reconnaissance using drones to find a safe route to Cape Denison. We will attempt to access the site using ARGO's — specialised ATV's ideal for this journey over the fast ice; if conditions prove unsuitable we will attempt landfall elsewhere. After nine days in the area we will return to New Zealand via the subantarctic islands, arriving on the 4th January 2013.

This will be a truly unique voyage, offering the public an opportunity to take part in an exciting scientific expedition to the Antarctic continent.

